

Project Manager JMW
Drawn By JMW
DWG 06398824-IMP-LSRV Stormwater
X-Ref(s) ---

Issue/Revision	No.	Date
BID / PERMIT		06/04/25
ADDENDUM #1	△	09/26/25
ADDENDUM #2	△	10/20/25
ADDENDUM #3	△	11/14/25
FOR BID		11/24/25

© Copyright 2025, McGill Smith Punshon, Inc.

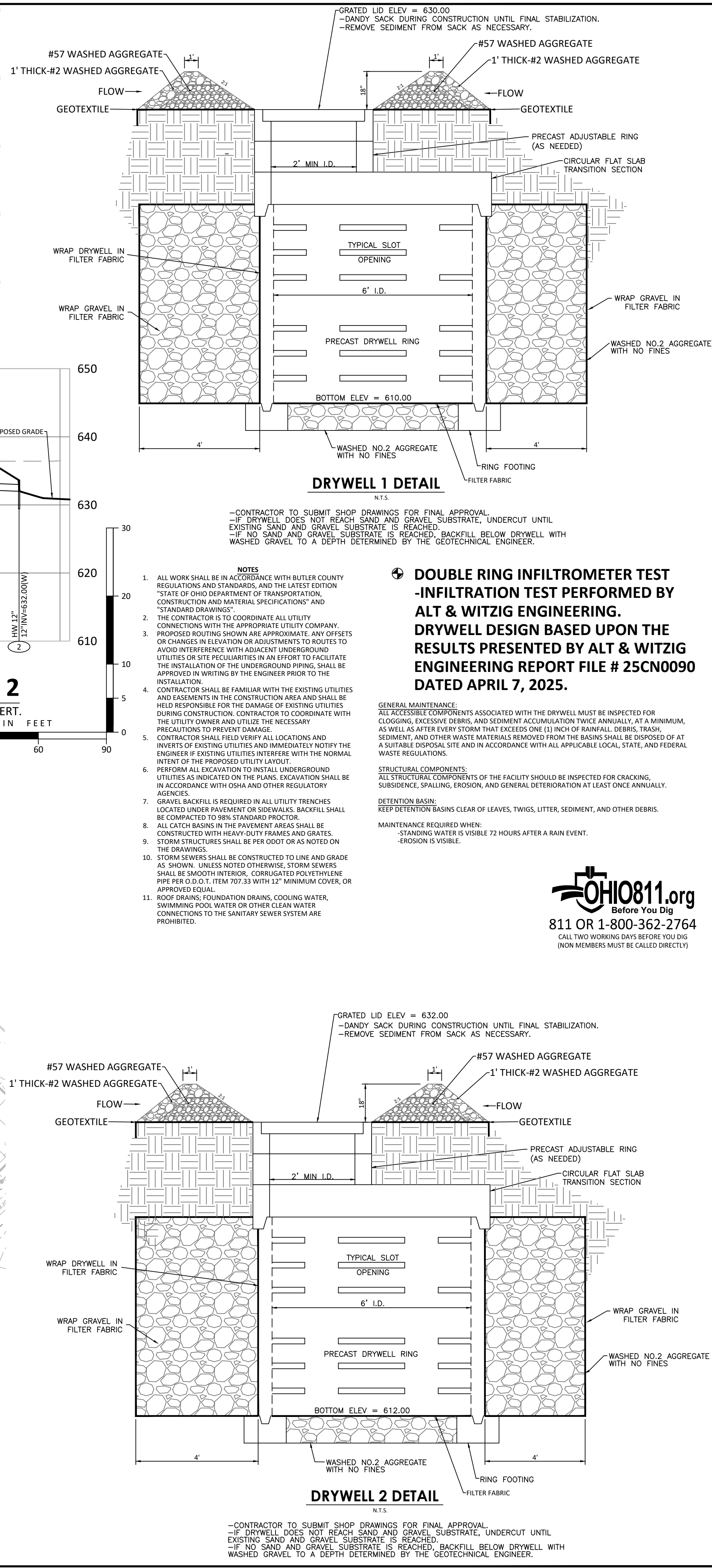
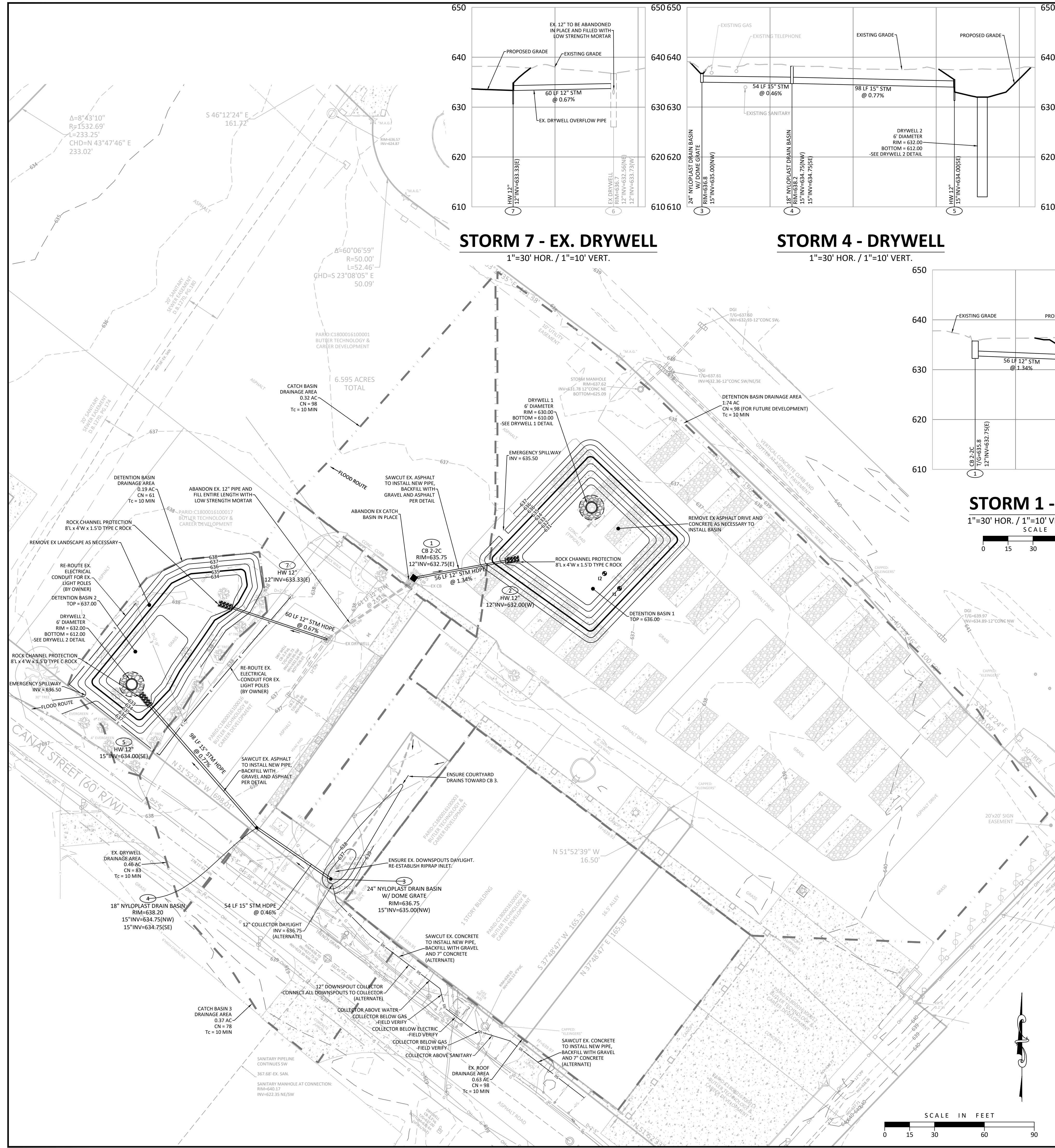
STORMWATER IMPROVEMENTS BUTLER TECH LE SOURDSVILLE CAMPUS

101 JERRY COUCH BLVD
MIDDLETOWN, OH 45044

Sheet Title

LSRV SITE PLAN

Project Number 06398.82
Drawing Scale 1" = 30'
Sheet Number C100
File Number 06398



DOUBLE RING INFILTROMETER TEST -INFILTRATION TEST PERFORMED BY ALT & WITZIG ENGINEERING. DRYWELL DESIGN BASED UPON THE RESULTS PRESENTED BY ALT & WITZIG ENGINEERING REPORT FILE # 25CN0090 DATED APRIL 7, 2025.

GENERAL MAINTENANCE:
ALL ACCESSIBLE COMPONENTS ASSOCIATED WITH THE DRYWELL MUST BE INSPECTED FOR CLOGGING, EXCESSIVE DEBRIS, AND SEDIMENT ACCUMULATION TWICE ANNUALLY, AT A MINIMUM, AS WELL AS AFTER EVERY STORM THAT EXCEEDS ONE (1) INCH OF RAINFALL. DEBRIS, TRASH, SEDIMENT, AND OTHER WASTE MATERIALS REMOVED FROM THE BASINS SHALL BE DISPOSED OF AT A SUITABLE DISPOSAL SITE AND IN ACCORDANCE WITH ALL APPLICABLE LOCAL, STATE, AND FEDERAL WASTE REGULATIONS.

STRUCTURAL COMPONENTS:
ALL STRUCTURAL COMPONENTS OF THE FACILITY SHOULD BE INSPECTED FOR CRACKING, SUBSIDENCE, SPALLING, EROSION, AND GENERAL DETERIORATION AT LEAST ONCE ANNUALLY.

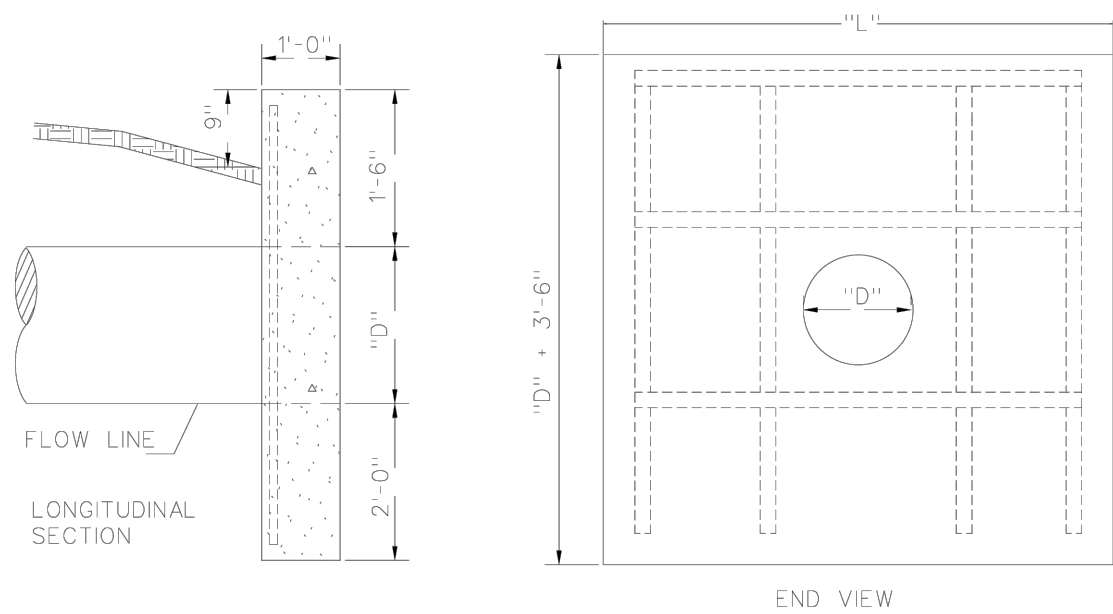
DETENTION BASIN:
KEEP DETENTION BASINS CLEAR OF LEAVES, TWIGGS, LITTER, SEDIMENT, AND OTHER DEBRIS.

MAINTENANCE REQUIRED WHEN:
-STANDING WATER IS VISIBLE 72 HOURS AFTER A RAIN EVENT.
-EROSION IS VISIBLE.

OHIO811.org
Before You Dig
811 OR 1-800-362-2764
CALL TWO WORKING DAYS BEFORE YOU DIG
(NON MEMBERS MUST BE CALLED DIRECTLY)

—CONTRACTOR TO SUBMIT SHOP DRAWINGS FOR FINAL APPROVAL.
—IF DRYWELL DOES NOT REACH SAND AND GRAVEL SUBSTRATE, UNDERCUT UNTIL EXISTING SAND AND GRAVEL SUBSTRATE IS REACHED.
—IF NO SAND AND GRAVEL SUBSTRATE IS REACHED, BACKFILL BELOW DRYWELL WITH WASHED GRAVEL TO A DEPTH DETERMINED BY THE GEOTECHNICAL ENGINEER.

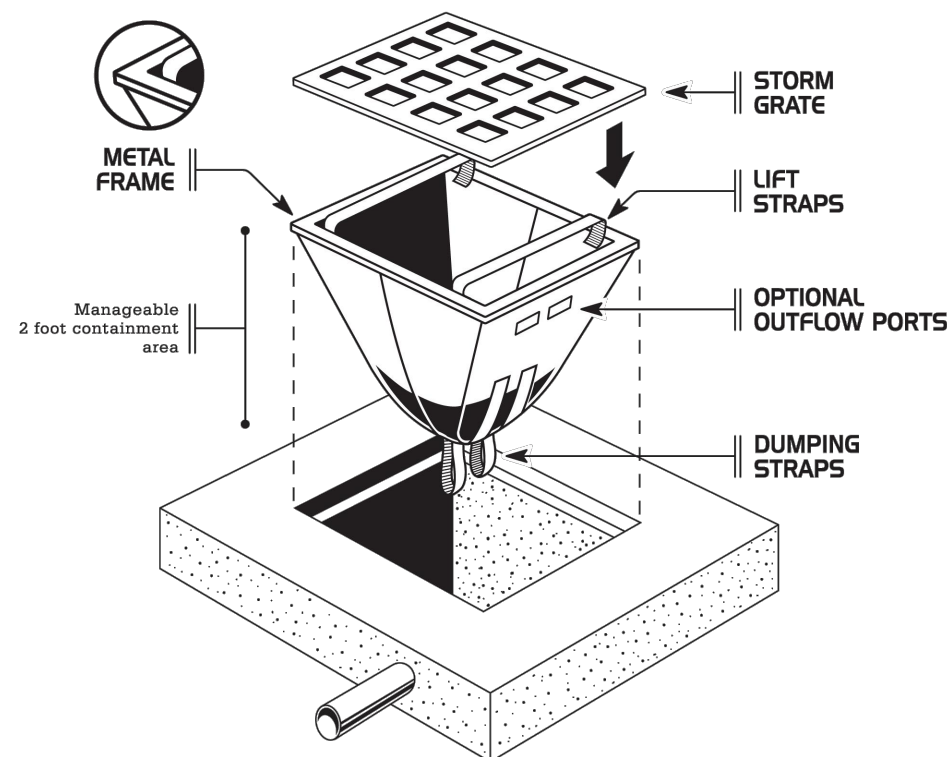
HEADWALLS FOR PIPES
HAVING A DIAMETER GREATER THAN 36 INCHES
SHALL BE DESIGNED AS A CANTILEVER OR
GRAVITY TYPE WALL.



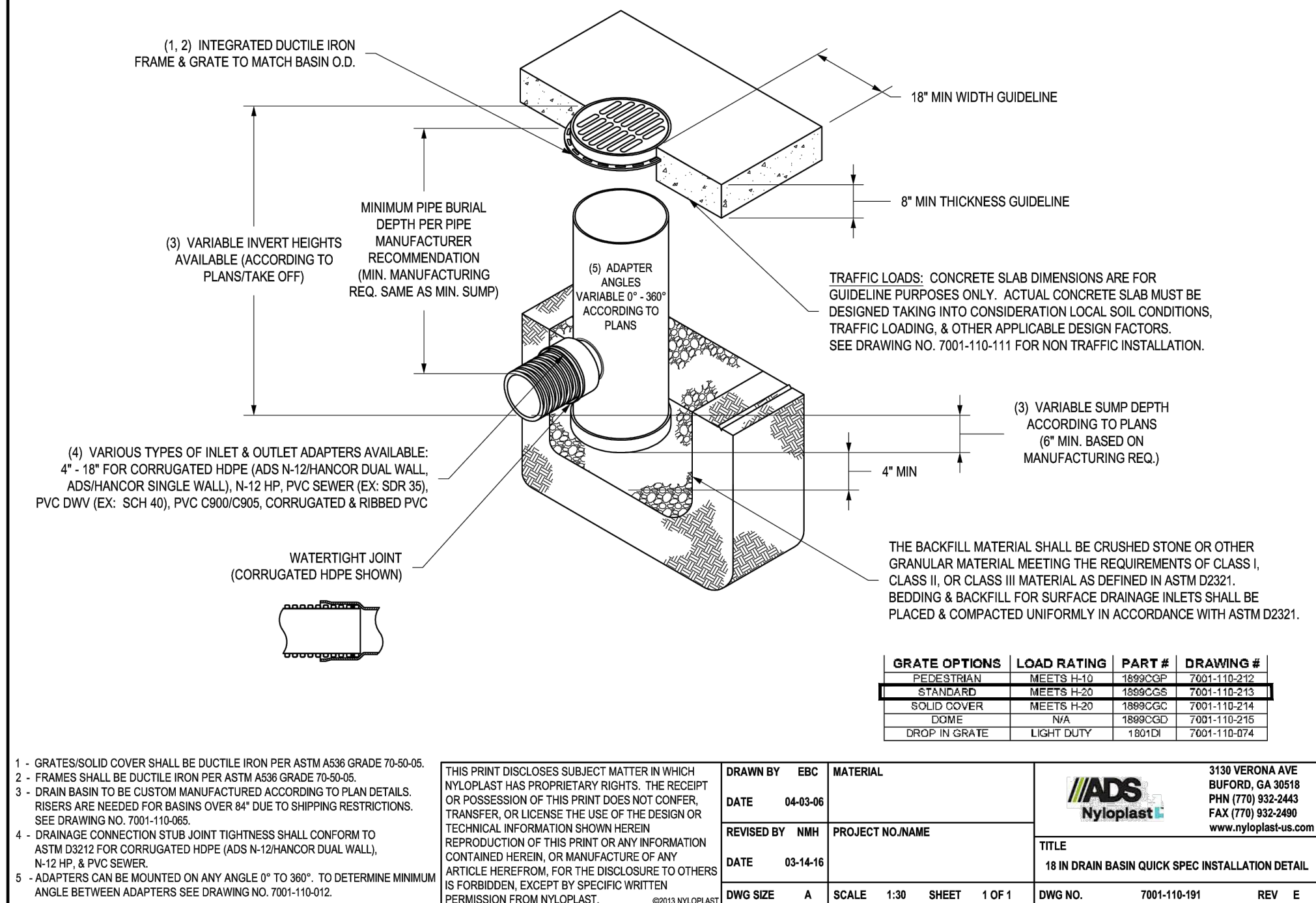
REINFORCED CONCRETE HEADWALL

REVISIONS	DATE	C-15	STANDARD
			HEADWALLS
			PIPE SIZE 12" - 36"
		CHK. BY: EJP	EFFECTIVE DATE: 1-1-2010
		BUTLER COUNTY ENGINEERS OFFICE	
		AND OPERATIONS FACILITY	
		1921 FARGOSE AVENUE - HAMILTON, OH 45011	
		PHONE 863-3144	

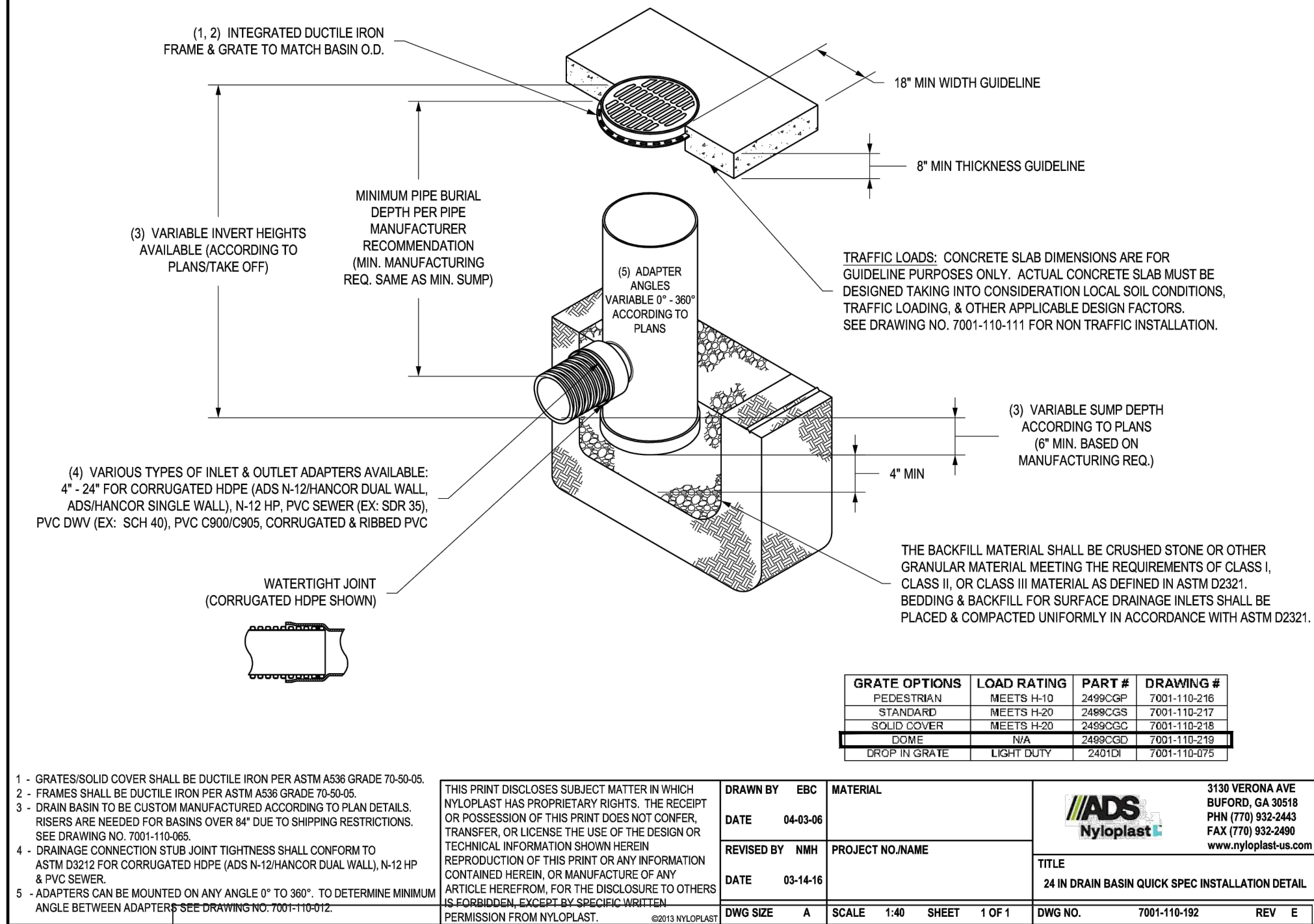
DANDY SACK®, FRAMED MODEL



NYLOPLAST 18" DRAIN BASIN: 2818AG __ X



NYLOPLAST 24" DRAIN BASIN: 2824AG __X



STORMWATER IMPROVEMENTS
BUTLER TECH LE SOURDSVILLE CAMPUS

101 JERRY COUCH BLVD
MIDDLETOWN, OH 45044

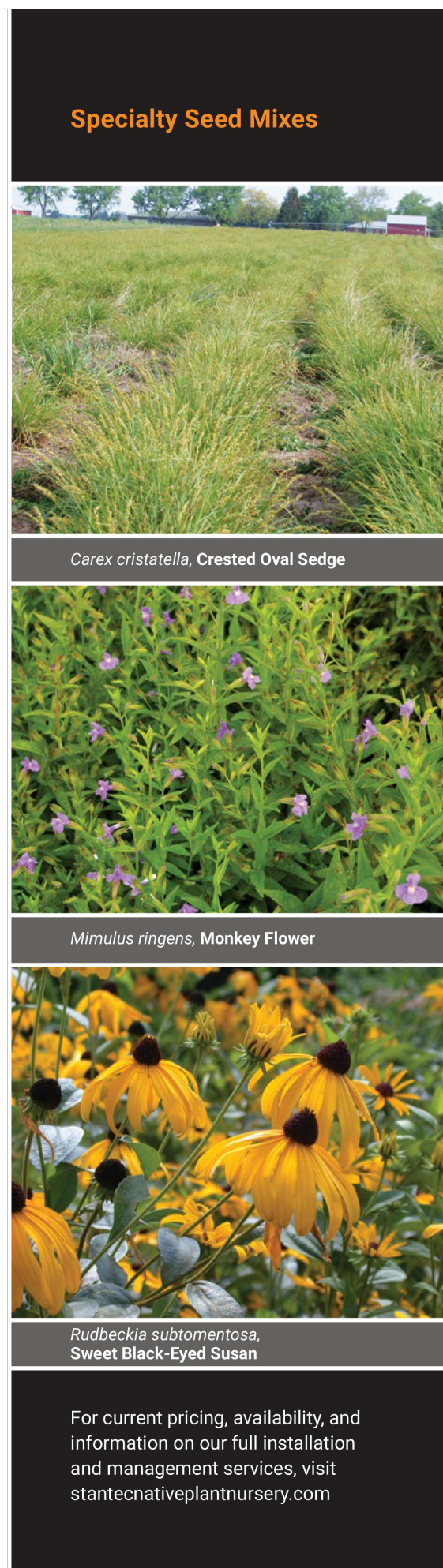
Sheet Title

LSRV DETAILS

Project Number 06398.82
Drawing Scale NTS
Sheet Number C101
File Number 06398

DETENTION BASIN SEED MIX

Botanical Name	Common Name	PLS/Dz/Acre
Permanent Grasses/Sedges/Rushes		
<i>Bamboschoenus fruticilis</i>	River Bulrush	4.00
<i>Carex cristata</i>	Crested Dart Sedge	0.50
<i>Carex lurida</i>	Bottlebrush Sedge	2.00
<i>Carex vulpinoidea</i>	Brown Fox Sedge	2.00
<i>Eleocharis obtusa</i>	Blunt Spike Rush	0.50
<i>Elymus virginicus</i>	Virginia Wild Eye	24.00
<i>Glyceria striata</i>	Fowl Mania Grass	1.00
<i>Juncus effusus</i>	Common Rush	1.00
<i>Leersia oryzoides</i>	Flat Grass	1.00
<i>Panicum virgatum</i>	Switch Grass	2.00
<i>Scheuchzeria palustris</i>	Great Bulrush	3.00
<i>Scirpus atrovirens</i>	Dark Green Rush	2.00
<i>Scirpus cyperinus</i>	Wood Grass	1.00
	Total	44.00
Temporary Cover		
<i>Avena sativa</i>	Common Oat	\$12.00
	Total	\$12.00
Forbs and Struts		
<i>Aster subcornutus</i>	Common Water Plantain	2.50
<i>Asclepias incarnata</i>	Swamp Milkweed	2.00
<i>Bidens</i> spp.	Bidens Species	2.00
<i>Eragrostis perfoliatus</i>	Common Bannet	1.00
<i>Helenium autumnale</i>	Shreevee	2.00
<i>Iris</i> spp.	Blue Flag Species	4.00
<i>Lycopus americanus</i>	Common Water Horehound	0.50
<i>Mimulus ringens</i>	Mooey Flower	1.00
<i>Pentstemon</i> spp.	Diach Stoecker	0.50
<i>Periscleia</i> spp.	Pinkweed Species	2.00
<i>Rudbeckia hirta</i>	Sweet Black-Eyed Susan	1.00
<i>Rudbeckia triloba</i>	Brown-Eyed Susan	1.50
<i>Sagittaria latifolia</i>	Common Arrowhead	1.00
<i>Senna hebecarpa</i>	Wild Senna	2.00
<i>Symphoricarpos lanceolatus</i>	Panicled Aster	0.50
<i>Symphoricarpos novae-angliae</i>	New England Aster	0.50
<i>Thalictrum dasycarpum</i>	Purple Meadow Rue	2.00
	Total	25.00



For current pricing, availability, and information on our full installation and management services, visit stantecnativeplantnursery.com

STORM SEWER TRENCH DETAIL

REVISIONS: 08/23/2023	DATE APPROVED: 09/01/2023 PAGE No. 600-13
--------------------------	---